



TRANSPORTER® LOW PROFILE

TRANSPORTER® LP ACCESSORIES & PARTS

A Swivel Mount or Spring Compensator can be added to new or existing Transporter® TPLP30's for best part compliance. These lightweight, anodized, aluminum constructed mounts fit most TPLP30 magnets to accommodate material variances and uneven surfaces. Low center of rotation allows magnet to stay on target. Our newly styled upper housing was redesigned with a groove to accommodate these mounts. If your TPLP30 does not contain a mounting groove, a replacement upper housing can be purchased.

SMFLG30 - Swivel Mount for TPLP30:

- » Flange mounted
- » Low profile swivel mount for TPLP30
- » Allows magnet to swivel +/- 3° in all directions
- » Not compatible to NR and DA
- » (4) #10-32 tapped holes on 2.50" diameter bolt circle (equally spaced)



SMFLG30 on TPLP30



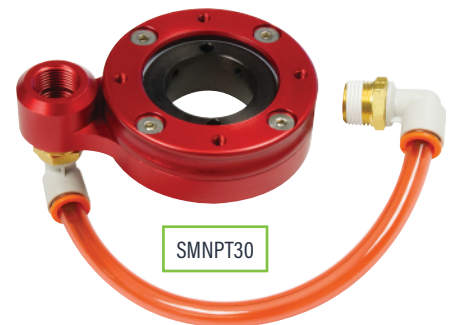
SMFLG30

SMNPT30 - Swivel Mount for TPLP30

- » 3/8" NPT mounted
- » Low profile swivel mount for TPLP30
- » Allows magnet to swivel +/- 3° in all directions
- » Not compatible to BS, NR and DA
- » Air line and fitting shown are included



SMNPT30 on TPLP30

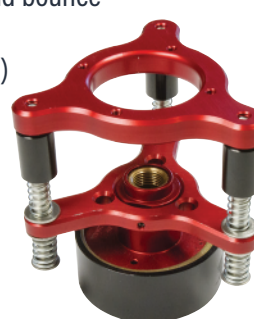


SMNPT30

SCFLG30 - Spring Compensator for TPLP30

- » Flange mounted
- » Crash compliance springs to prevent damage to tooling
- » Load compliance springs to minimize the effects of shock loading and bounce
- » Allows magnet to swivel +/- 8° in all directions
- » (4) #10-32 tapped holes on 2.50" diameter bolt circle (equally spaced)

New upper housing for TPLP may be required



SCFLG30 on TPLP30



SCFLG30

Key Markets

Automotive Tier 1 & 2, Stamping

Related Products

Sheet Lifters, Tube Lifters, Transporters®, Permatrol® Family, Perm-Electro Lifts, PowerLifts®, Creative Lifts®

TOLL FREE **1.888.582.0823** imi@magnetics.com



END-OF-ARM TOOLING

TRANSPORTER® LOW PROFILE

Transporter® LP Accessories and Parts

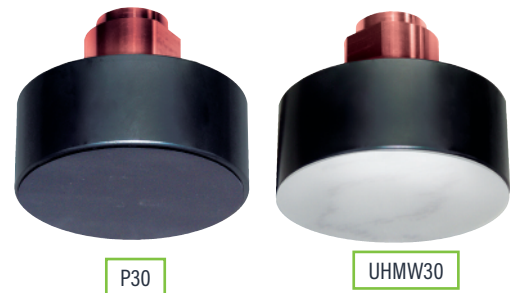
Low Skid Boots and Pads protect against marring of class "A" blanks while extending the life of the magnet by protecting the face from wear. In many applications the boots and pads also assist in keeping parts from shifting under shear in transport. The boots cover the edge of the cup for complete blank protection while the pads cover the face of the cup for increased wear protection to extend the life of the magnet.



BB15

BB30

BB50



P30

UHMW30

PART #	NON-SKID TPLP COVERS	MAX. TEMP.
BB15	Black Urethane Boot for 1.5" dia. Transporter®	180°F (82.2°C)
BB30	Black Urethane Boot for 3" dia. Transporter®	180°F (82.2°C)
BB50	Black Urethane Boot for 5" dia. Transporter®	180°F (82.2°C)
P15	Urethane Adhesive Pad for 1.5" dia. Transporter®	150°F (65.6°C)
P30	Urethane Adhesive Pad for 3" dia. Transporter®	150°F (65.6°C)
P50	Urethane Adhesive Pad for 5" dia. Transporter®	150°F (65.6°C)
UHMW15	UHMW Adhesive Pad for 1.5" dia. Transporter®	176°F (80.0°C)
UHMW30	UHMW Adhesive Pad for 3" dia. Transporter®	176°F (80.0°C)
UHMW50	UHMW Adhesive Pad for 5" dia. Transporter®	176°F (80.0°C)

UHMW Adhesive Pads 0.030" Thick

Transporter® LP Accessories For Mounting on Tooling Booms

Manifolds for Transporter® Installation

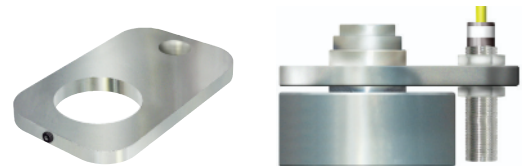
- » Mounting holes on four sides for installation
- » Ideal air flow to operate 4 Low Profile Transporters®
- » Anodized aluminum construction
- » 1/2" FPT inlets on each end
- » Four 3/8 NPT outlets



PART #	DESCRIPTION
450391	Manifold 1x1/2FPT 4x3/8 FPT Out

Proximity Switch Mounting for TPLP's

- » Machined aluminum mount for 3" or 1.5" diameter Low Profile Transporters®
- » A set screw holds the mount securely to the magnet
- » 1/2" diameter thru-hole accepts a 12mm proximity switch



PART #	DESCRIPTION
MC0369	Transporter® 12mm Proximity Switch Mount (1.5")
MC0334	Transporter® 12mm Proximity Switch Mount (3")
601695	Proximity Switch, 12mm, 2-wire, DC sink/source

Bulk Head Spring Mount BHSM750

- » Ideal for installation on end user specified mounting plates
- » 1/4 NPT Female Inlet
- » 3/8 NPT Male Outlet
- » Requires a 1-1/4" through hole or a 1-1/8"-12 tapped hole for mounting
- » Lightweight aluminum construction

