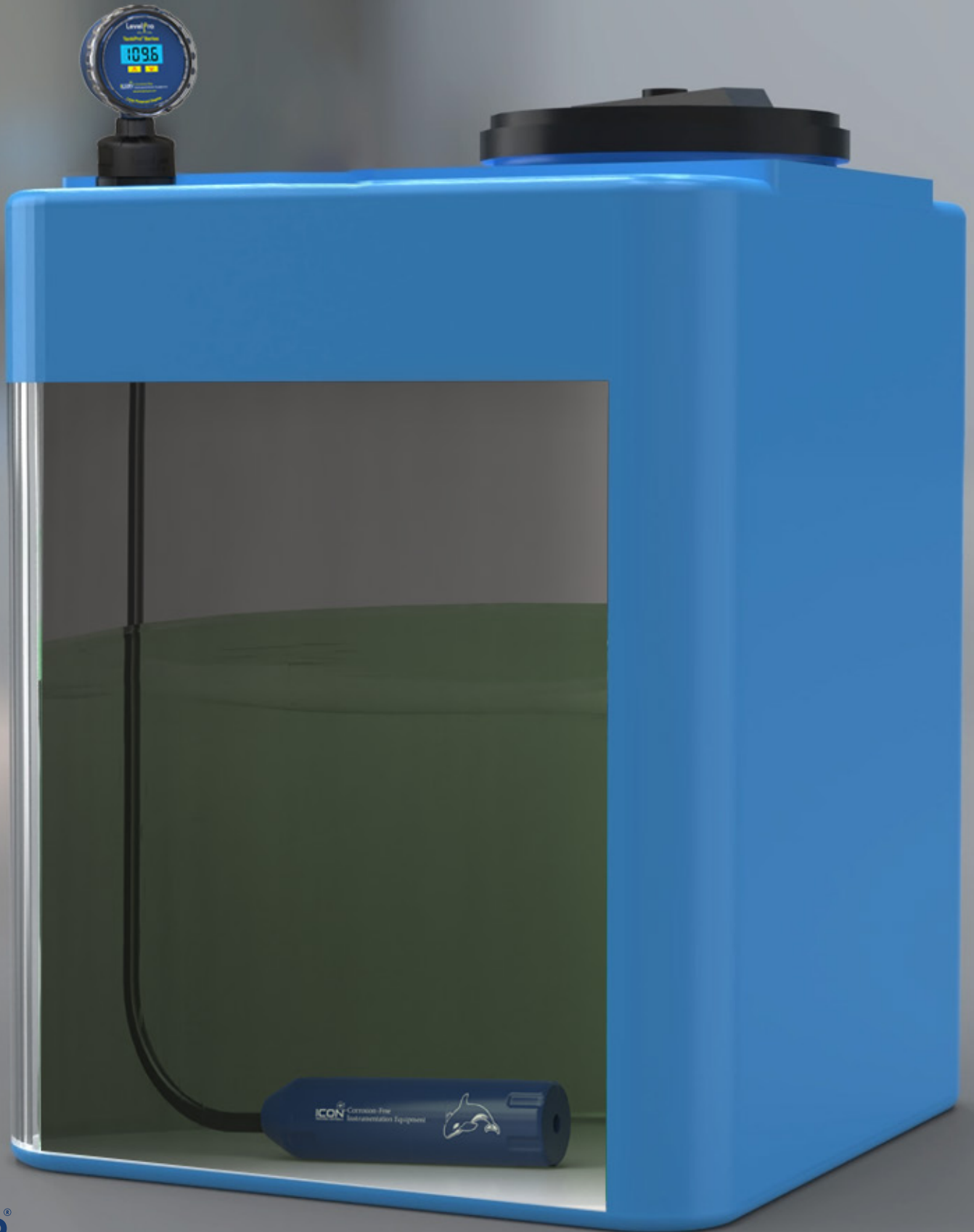


LevelPro® — TankPro® Series Submersible Level Sensor Transmitter

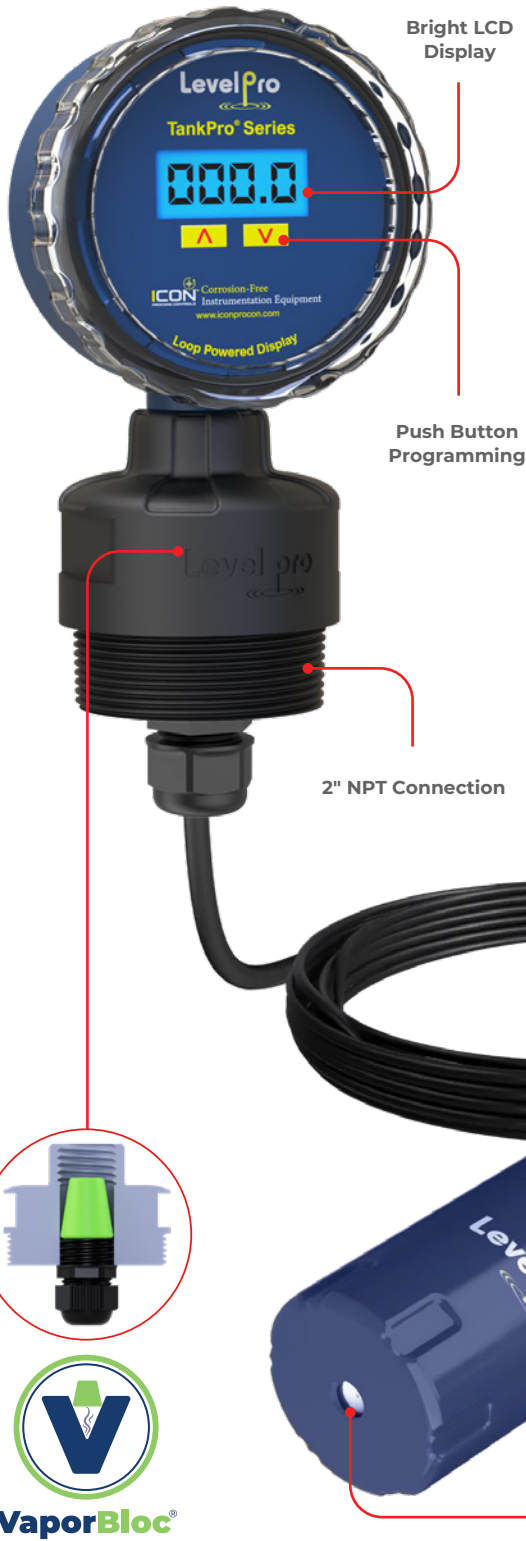
ICON™ Corrosion-Free
PROCESS CONTROLS Instrumentation Equipment



LevelPro®

LevelPro® — TankPro® Series

Submersible Level Sensor Transmitter



Features

- ✓ Higher Accuracy: $\pm 0.5\%$
- ✓ Superior Chemical/Corrosion Resistance
- ✓ PVC | PP | PVDF | 316 SS | PTFE Teflon®
- ✓ Teflon® Jacketed Cable
- ✓ Kalrez® O-Ring Seal
- ✓ 14ft Measuring Range
- ✓ 4-20mA Loop Powered
- ✓ Works on Foam | Vapor | Turbulence | Condensate
- ✓ Integrally Molded Internal Weight | No Floating
- ✓ IP68 | NEMA 4X Enclosure

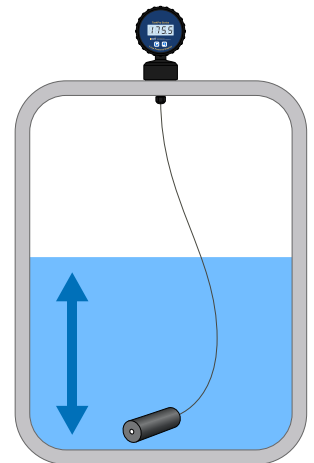
The Solution to Tough Applications Where Ultrasonic Sensors Simply DO NOT WORK!

The TankPro® Submersible Level Transmitter provides continuous level measurement for both corrosive and non-corrosive liquids. These submersible hydrostatic transmitters have been designed for the toughest industrial applications. Unlike ultrasonic level transmitters, our liquid level sensors are completely unaffected by any foam, vapor, turbulence or condensate in the tank.

The TankPro® Level Transmitter comes equipped with a local LCD display that mounts the top of the tank with a 1" or 2" NPT connection.

The TankPro® Series comes in PVC, PP, PVDF, PTFE Teflon® or 316 SS making them the perfect level sensor for your chemical tank application.

Accurate level reading by measuring the head pressure of the liquid pushing down on ceramic sensing diaphragm.



VaporBloc® Technology

- ✓ Blocks Out Corrosive Chemical Fumes
- ✓ Pressure Tested to 75 Psi
- ✓ Protects Internal Wiring Connections



LevelPro® — TankPro® Series

Submersible Level Sensor Transmitter

Technical Specifications

Input Pressure Range																					
Level ft/H ₂ O	14 *Consult Factory for Levels > 14 ft																				
Overpressure Psi	210 290 290 380																				
Output Signal Supply																					
Output Signal	4-20mA																				
Power Supply	9-36 VDC Loop Powered																				
Performance																					
Accuracy	<±0.5% Full Scale																				
Permissible Load	$R_{max} = [(V_s - V_{smin})/0.02 A] \Omega$																				
Influence Effects	Supply: 0.05% Full Scale/10V Load: 0.05% Full Scale/K Ω																				
Long Term Stability	<± 0.1% Full Scale over One Year																				
Response Time	<10 msec																				
Permissible Temperatures																					
Storage/Media Temperatures	<table border="1"> <tr> <td>PVC :</td> <td>32 to 140°F</td> <td>PP :</td> <td>-20 to 170°F</td> <td>PVDF :</td> <td>-40 to 170°F</td> <td>PTFE :</td> <td>-40 to 170°F</td> <td>316 SS :</td> <td>-40 to 170°F</td> </tr> <tr> <td></td> <td>0 to 60°C</td> <td></td> <td>-28 to 76°C</td> <td></td> <td>-40 to 76°C</td> <td></td> <td>-40 to 76°C</td> <td></td> <td>-40 to 76°C</td> </tr> </table>	PVC :	32 to 140°F	PP :	-20 to 170°F	PVDF :	-40 to 170°F	PTFE :	-40 to 170°F	316 SS :	-40 to 170°F		0 to 60°C		-28 to 76°C		-40 to 76°C		-40 to 76°C		-40 to 76°C
PVC :	32 to 140°F	PP :	-20 to 170°F	PVDF :	-40 to 170°F	PTFE :	-40 to 170°F	316 SS :	-40 to 170°F												
	0 to 60°C		-28 to 76°C		-40 to 76°C		-40 to 76°C		-40 to 76°C												
Thermal Effects Offset & Span																					
Thermal Drift	<± 0.02% FSO/K in Compensated Range -20 to 170°F																				
Display																					
LCD																					
Materials Wetted																					
Housing	PVC PP PVDF PTFE 316 SS																				
Seal	FFKM - Kalrez®																				
Diaphragm	Pure Ceramic 96% Al ₂ O ₃ 316 SS																				
Electrical Protection																					
Short-Circuit Protection	Permanent																				
Reverse Polarity Protection	No Damage to Sensor																				
Electromagnetic Compatibility	Emission Immunity According to EN 61326																				
Electrical Connection																					
Jacketed Cable	PTFE Teflon® -40 to 200°F																				
3-Wire Cable with Integrated Air Tube for Reference to Atmospheric Pressure																					
General (Sensor Only)																					
Current Consumption	Max. 25mA																				
Weight Grams	PVC : 575g PP : 475g PVDF : 825g PTFE : 875g 316 SS : 875g																				
Ingress Protection	IP 68 NEMA 4X																				
CE-Conformity	EMC Directive: 2004 108 EC																				
Standards & Approvals																					
CE FCC RoHS Compliant																					

*Contact Factory for different options

Model Selection

TankPro® — Submersible Level Sensor + Display		
Part Number	Material	Output
191-1001-A113302F	PVC	1 Relay + 4-20mA
191-1001-B113302F	PP	1 Relay + 4-20mA
191-1001-E113302F	PVDF	1 Relay + 4-20mA
191-1001-S113302F	316 SS	1 Relay + 4-20mA

Wiring

24VDC	Color
Supply +	Red
Supply -	Black

