



canfield  
connector



# GT 4 PIN SERIES RECEPTACLE AND PLUG MOLDED CONNECTORS

Connectors  
and Accessories

## GENERAL DESCRIPTION

The Canfield Connector GatorMate™ GT 4 Pin Series Deutsch-style fully molded Receptacle and Plug mobile connectors feature IP67 housings that are shock, vibration, moisture, and dust resistant. The GT 4 Pin Series is available with many wire styles and lengths and boasts high durability factors and application versatility and is available in either the Receptacle or Plug style versions, and additional options include indicator lights and surge suppression. Canfield Connector offers any version of the GT 4 Pin Series connectors with special wires including high flex, media compatible, special use, or high temperature wire on request and is made from tough engineered thermoplastics manufactured in the USA.

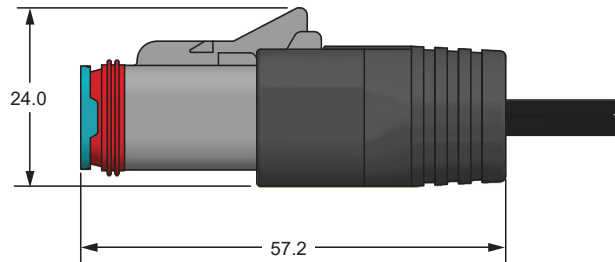
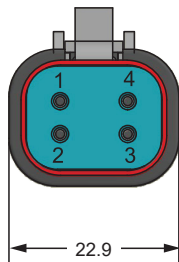


Unlighted Plug version shown above

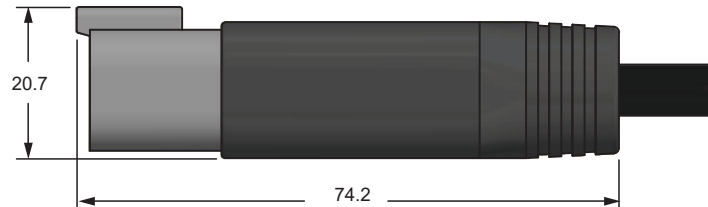
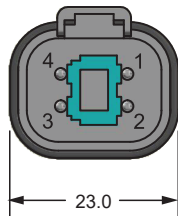
## DIMENSIONAL DATA

All dimensions are in millimeters unless otherwise noted.

### PLUG



### RECEPTACLE



# TECHNICAL DATA

<b>Current Max.</b>	10 Amps
<b>Voltage Max.</b>	120 VAC 50/60 Hz, 250 VDC
<b>Materials</b>	Housing: Thermoplastic Contacts: Brass, Nickel Plating Overmold: TPU
<b>Temperature Range</b>	PVC: -25° to +80°C TPU: -40° to +80°C
<b>Environmental Protection</b>	IP67, IP69, IP69K (Securely connected)
<b>Cable Diameter</b>	0.275
<b>Cable Conductor Colors</b>	Brown / Blue / Black / Yellow-Green (Others available on request)
<b>Cable Type</b>	PVC or PUR; Black
<b>Wire Gauge</b>	18 AWG
<b>Number of Contacts</b>	4 connections

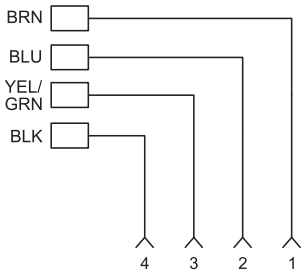
NOTE: Slight discoloration may occur to translucent material after prolonged exposure to UV rays.

# WIRING INFORMATION

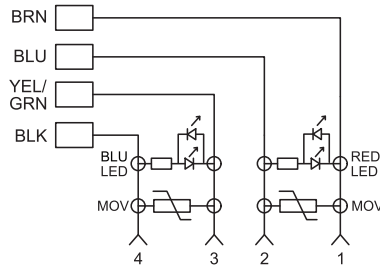
Terminal Configuration	
Wire Type	EUR
(+) Pin 1	BRN
(-) Pin 2	BLU
(-) Pin 3	YEL/GRN
(+) Pin 4	BLK

# SCHEMATIC

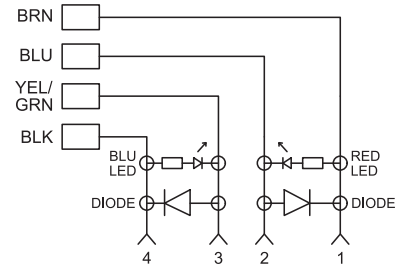
No Suppression



MOV Suppression



Diode Suppression



# ORDERING INFORMATION

G T   0 4 -     -

**Connector Type**  
04 - Receptacle\*  
06 - Plug  
\* Unlighted only

**Wire Lengths**  
6 - 6' Cord  
F - 15' Cord

**Operating Voltage**  
0 - 0-120V 50/60Hz AC/DC  
2 - 6-24V 50/60Hz AC/DC  
5 - 48-120V 50/60Hz AC/DC  
A - 6-24 VDC (Diode Only)

**Surge Suppression**  
0 - None  
1 - Diode (DC Only)  
5 - MOV

**Packaging Code**  
A - Bulk  
G - Individual bagged

**Wire Type**  
1 - PVC  
2 - PUR

**Lighting Option**  
0 - Unlighted  
1 - Lighted

**Ordering Example:** GT0604-6200-1A

Plug type, 6' cord length, 6-24V 50/60Hz AC/DC, no suppression, Unlighted, PVC, bulk