

# Quick Start Manual



**truflo®**

**RoHS** **CE**  
Compliant

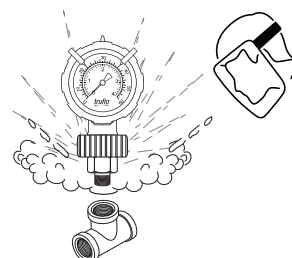
Read the user's manual carefully before starting to use the unit.  
Producer reserves the right to implement changes without prior notice.

# Truflo® — OBS Series

## Pressure Gauge & Integral Guard

### Safety Information

- De-pressurize and vent system prior to installation or removal
- Confirm chemical compatibility before use
- **DO NOT** exceed maximum temperature or pressure specifications
- **ALWAYS** wear safety goggles or face-shield during installation and/or service
- **DO NOT** alter product construction



#### Warning | Caution | Danger

Indicates a potential hazard. Failure to follow all warnings may lead to equipment damage, or failure, injury, or death.



#### Note | Technical Notes

Highlights additional information or detailed procedure.



#### Personal Protective Equipment (PPE)

Always utilize the most appropriate PPE during installation and service of Truflo products.



#### Pressurized System Warning

Sensor may be under pressure. Take caution to vent system prior to installation or removal. Failure to do so may result in equipment damage and/or serious injury.

Before installation, be certain the appropriate gauge has been selected when considering operating pressure/full scale pressure/proof pressure, wetted material requirements, media compatibility, operating temperature, vibration, pulsation, desired accuracy and any other gauge component related to the service application. This includes the potential need for protective attachments and/or special installation requirements.

Failure to do so could result in equipment damage, gauge failure and/or personal injury.

Only qualified personnel should be permitted to install and maintain pressure gauges.

### Product Description

The OBS Series is the industry's only one-piece plastic pressure gauge and integral molded gauge guard.

Gauge guards are utilized to protect the pressure gauge from any corrosive media in the process system via an isolator diaphragm.

OBS Pressure Gauges are a one-piece design and come factory pre-filled, resulting in an industry leading accuracy of 1.5%. Eliminating the need for filling saves the user time and the difficult task of having to fill a gauge isolator. The (3) movable red, yellow and green range tabs are designed to act as a visual pressure alert for bag or filter change-outs.

The OBS Series are all equipped with a Teflon® Diaphragm, making the entire unit completely corrosion resistant and the perfect pressure gauge for chemical applications.

Engineering the entire body in a plastic housing rather than just the gauge guard allows users to be confident that the complete unit will stand up in even the most corrosive environments.



PVC

PP

PVDF

PTFE

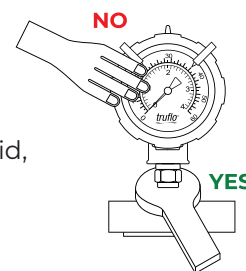


# Truflo® — OBS Series

## Pressure Gauge & Integral Guard

### Installation Instructions

- Do not tighten by grasping the case of the gauge as this may cause damage.  
**Always Pressure Test Connections for Leaks with Water Prior to Use on Chemical Service.**
- Before installing the OBS Series pressure gauge, ensure attention is given to the Process Liquid, Chemical Compatibility, Temperature, Vibration, Pressure Spikes, and other climatic and application conditions that may adversely affect the performance.
- The user shall ensure that the correct gauge pressure range and the correct materials of construction are selected.



After installation the vent plug can be cut to relieve internal pressure changes in the gauge case that otherwise would have been induced by environmental changes in pressure and/or temperature. Without being vented this change in internal pressure could adversely affect the accuracy of the gauge.

If liquid filled, only open vent plugs when the plug is oriented in the vertical position.

### Applicable Standards

EN 837-1 : Bourdon tube pressure gauges, dimensions, metrology, requirements and testing.

EN 837-2 : Selection and installation recommendations for pressure gauges.

ASME B40.100 : Pressure gauges and gauge attachments

2014/68/EC : Pressure equipment directive.

**Specifications :** Please refer to the respective OBS Series Datasheet.



### Storage

- Gauge should remain in original packaging until installation.  
This will protect from mechanical damage as well as environmental conditions.

### Maintenance & Repairs

Check regularly to ensure the gauge is in good working order.

When removing the gauge from the application make sure there is no pressure in the system and all system media has been isolated from the gauge.

If gauge is damaged or out of calibration, a new gauge must be installed.

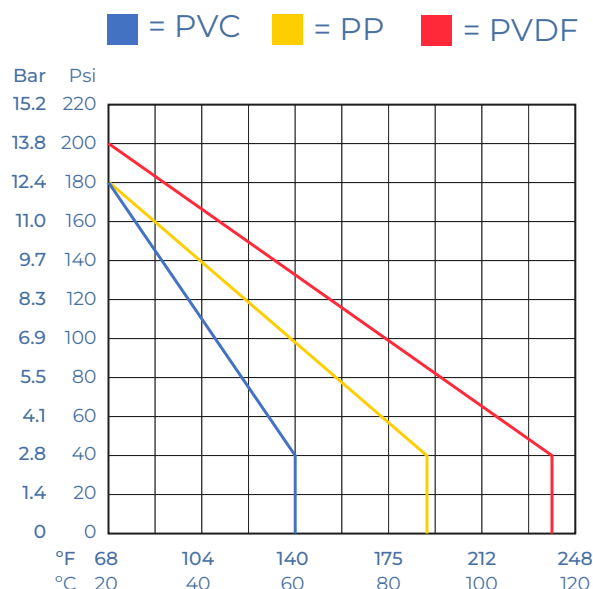
**IMPORTANT :** These gauges are not to be re-calibrated.

Misuse or misapplication of this gauge could most certainly result in gauge failure, equipment damage and/or personal injury.

### Temperature | Pressure Graphs | Non-Shock

#### NOTE:

The pressure/temperature graphs are specifically for the Truflo® Pressure Gauges. During system design, the specifications of all components must be considered.



# Truflo® — OBS Series

## Pressure Gauge & Integral Guard

### Model Selection

OBS — Gauge + Guard Combo		
Size	Part Number	Material
½"	OBS-P-0-X	PVC
½"	OBS-PP-0-X	PP
½"	OBS-PF-0-X	PVDF

X = Max Pressure

15 ▶ 0 - 15 Psi      100 ▶ 0 - 100 Psi  
30 ▶ 0 - 30 Psi      160 ▶ 0 - 160 Psi  
60 ▶ 0 - 60 Psi      200 ▶ 0 - 200 Psi

½" FNPT is standard

Add Suffix -

'M' - Male ½" NPT      'F' - Flanged      'S' - ½" Socket

\*Consult Factory for Flanged Pricing | Alternative Pressure Ratings

2VU — Double Sided Gauge + Guard Combo		
Size	Part Number	Material
½"	2VU-P-0-X	PVC
½"	2VU-PP-0-X	PP
½"	2VU-PF-0-X	PVDF

X = Max Pressure

15 ▶ 0 - 15 Psi      100 ▶ 0 - 100 Psi  
30 ▶ 0 - 30 Psi      160 ▶ 0 - 160 Psi  
60 ▶ 0 - 60 Psi      200 ▶ 0 - 200 Psi

End Connection Options

Socket PVC  
Flanged PP | PVDF  
Butt Fused PP | PVDF

½" FNPT is standard

Add Suffix -

'M' - Male ½" NPT      'F' - ½" Flanged      'S' - ½" Socket      'B' - ½" Butt Fused

\*Consult Factory for Alternative Pressure Ratings

OBS Big Ass Gauge — Gauge + Guard Combo		
Size	Part Number	Material
½"	BAG-P-0-X	PVC
½"	BAG-PP-0-X	PP

X = Max Pressure

30 ▶ 0 - 30 Psi      100 ▶ 0 - 100 Psi  
60 ▶ 0 - 60 Psi      160 ▶ 0 - 160 Psi

End Connection Options

Socket PVC  
Flanged PP | PVDF  
Butt Fused PP | PVDF

½" FNPT is standard

Add Suffix -

'M' - Male ½" NPT      'F' - ½" Flanged      'S' - ½" Socket      'B' - ½" Butt Fused

\*Consult Factory for Alternative Pressure Ratings

OBS-B — Center Mount Pressure Gauge		
Size	Part Number	Material
½"	OBS-B-P-0-X	PVC
½"	OBS-B-PP-0-X	PP
½"	OBS-B-PF-0-X	PVDF

X = Max. Pressure

15 ▶ 0 - 15 Psi      100 ▶ 0 - 100 Psi  
30 ▶ 0 - 30 Psi      160 ▶ 0 - 160 Psi  
60 ▶ 0 - 60 Psi      200 ▶ 0 - 200 Psi

½" FNPT is standard

Add Suffix -

'M' - Male ½" NPT      'F' - Flanged      'S' - ½" Socket

\*Consult Factory for Alternative Pressure Ratings

OBS-A — Panel Mount Pressure Gauge		
Size	Part Number	Material
½"	OBS-A-P-0-X	PVC
½"	OBS-A-PP-0-X	PP
½"	OBS-A-PF-0-X	PVDF

X = Max Pressure

15 ▶ 0 - 15 Psi      100 ▶ 0 - 100 Psi  
30 ▶ 0 - 30 Psi      160 ▶ 0 - 160 Psi  
60 ▶ 0 - 60 Psi      200 ▶ 0 - 200 Psi

End Connection Options

Socket PVC  
Flanged PP | PVDF  
Butt Fused PP | PVDF

½" FNPT is standard

Add Suffix -

'M' - Male ½" NPT      'F' - Flanged      'S' - ½" Socket

\*Consult Factory for Alternative Pressure Ratings

OBS-R — 360 Pressure Gauge		
Size	Part Number	Material
¼" NPT 316SS	OBS-R-PP-0-30	PP   316SS   PVC
¼" NPT 316SS	OBS-R-PP-0-60	PP   316SS   PVC

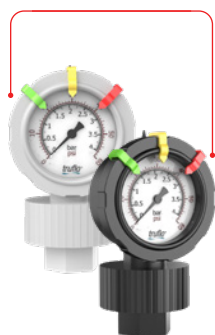
½" FNPT is standard

Add Suffix -

'M' - Male ½" NPT      'F' - Flanged      'S' - ½" Socket

\*Consult Factory for Flanged Pricing | Alternative Pressure Ratings

**OBS**  
Gauge + Guard Combo



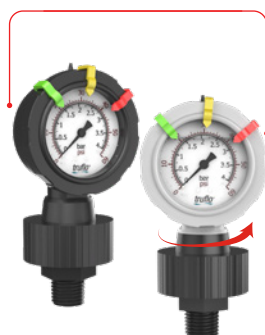
**OBS-2VU**  
Double Sided  
Gauge + Guard Combo



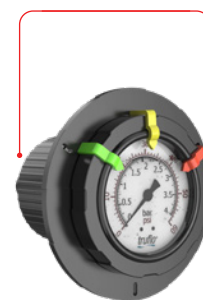
**OBS-BAG**  
(Big Ass Gauge)  
Gauge + Guard Combo



**OBS-R**  
360 Pressure Gauge



**OBS-A**  
Panel Mount  
Pressure Gauge



**OBS-B**  
Center Mount  
Pressure Gauge





### Warranty, Returns and Limitations

#### Warranty

**Icon Process Controls Ltd** warrants to the original purchaser of its products that such products will be free from defects in material and workmanship under normal use and service in accordance with instructions furnished by **Icon Process Controls Ltd** for a period of one year from the date of sale of such products. **Icon Process Controls Ltd** obligation under this warranty is solely and exclusively limited to the repair or replacement, at Icon Process Controls Ltd option, of the products or components, which **Icon Process Controls Ltd** examination determines to its satisfaction to be defective in material or workmanship within the warranty period. **Icon Process Controls Ltd** must be notified pursuant to the instructions below of any claim under this warranty within thirty (30) days of any claimed lack of conformity of the product. Any product repaired under this warranty will be warranted only for the remainder of the original warranty period. Any product provided as a replacement under this warranty will be warranted for the one year from the date of replacement.

#### Returns

Products cannot be returned to **Icon Process Controls Ltd** without prior authorization. To return a product that is thought to be defective, go to [www.iconprocon.com](http://www.iconprocon.com), and submit a customer return (MRA) request form and follow the instructions therein. All warranty and non-warranty product returns to **Icon Process Controls Ltd** must be shipped prepaid and insured. **Icon Process Controls Ltd** will not be responsible for any products lost or damaged in shipment.

#### Limitations

This warranty does not apply to products which: 1) are beyond the warranty period or are products for which the original purchaser does not follow the warranty procedures outlined above; 2) have been subjected to electrical, mechanical or chemical damage due to improper, accidental or negligent use; 3) have been modified or altered; 4) anyone other than service personnel authorized by **Icon Process Controls Ltd** have attempted to repair; 5) have been involved in accidents or natural disasters; or 6) are damaged during return shipment to **Icon Process Controls Ltd** reserves the right to unilaterally waive this warranty and dispose of any product returned to **Icon Process Controls Ltd** where: 1) there is evidence of a potentially hazardous material present with the product; or 2) the product has remained unclaimed at **Icon Process Controls Ltd** for more than 30 days after **Icon Process Controls Ltd** has dutifully requested disposition. This warranty contains the sole express warranty made by **Icon Process Controls Ltd** in connection with its products. **ALL IMPLIED WARRANTIES, INCLUDING WITHOUT LIMITATION, THE WARRANTIES OF MERCHANTABILITY AND FITNESS FOR A PARTICULAR PURPOSE, ARE EXPRESSLY DISCLAIMED.** The remedies of repair or replacement as stated above are the exclusive remedies for the breach of this warranty. **IN NO EVENT SHALL Icon Process Controls Ltd BE LIABLE FOR ANY INCIDENTAL OR CONSEQUENTIAL DAMAGES OF ANY KIND INCLUDING PERSONAL OR REAL PROPERTY OR FOR INJURY TO ANY PERSON. THIS WARRANTY CONSTITUTES THE FINAL, COMPLETE AND EXCLUSIVE STATEMENT OF WARRANTY TERMS AND NO PERSON IS AUTHORIZED TO MAKE ANY OTHER WARRANTIES OR REPRESENTATIONS ON BEHALF OF Icon Process Controls Ltd.** This warranty will be interpreted pursuant to the laws of the province of Ontario, Canada.

If any portion of this warranty is held to be invalid or unenforceable for any reason, such finding will not invalidate any other provision of this warranty.

For additional product documentation and technical support visit:

[www.iconprocon.com](http://www.iconprocon.com) | e-mail: [sales@iconprocon.com](mailto:sales@iconprocon.com) or [support@iconprocon.com](mailto:support@iconprocon.com) | Ph: 905.469.9283



by



Corrosion-Free  
Instrumentation Equipment

**Phone:** 905.469.9283 • **Sales:** [sales@iconprocon.com](mailto:sales@iconprocon.com) • **Support:** [support@iconprocon.com](mailto:support@iconprocon.com)