



**canfield
connector**

CS SERIES
ALL THREADED
MAGNETIC SENSORS FOR
UNIVERSAL APPLICATIONS

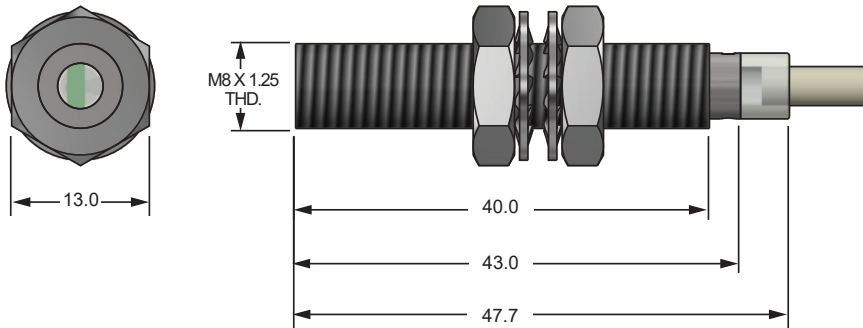
GENERAL DESCRIPTION

The Canfield Connector CS Series Cylindrical Threaded Mount Sensor is a rugged and compact magnetic sensor set within a miniature encapsulated Stainless Steel M8 threaded housing. Available in reed or electronic sensing, the CS sensor can sense magnets or magnetic objects in industrial machinery and mobile equipment. Typically used where greater sensing distance is required, the CS sensor changes state in the presence of a magnetic field. Electrical output for the CS is normally open, with sinking or sourcing outputs for the electronic versions. Input voltages available are 0 to 120 VAC/DC .5 Amp maximum for the reed and 5-24 VDC 0.2 Amp maximum for the electronic versions. The sensor is made of a Stainless Steel body, TPU encapsulant and has PVC wire standard and is NEMA 6. Temperature ranges are -20° to 80°C. The CS Series is proudly made in the U.S.A.



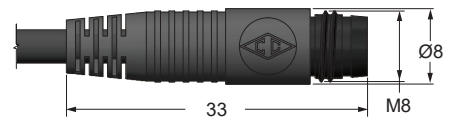
DIMENSIONAL DATA

All dimensions are in millimeters unless otherwise noted.

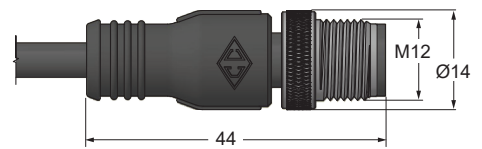


CONNECTION OPTIONS

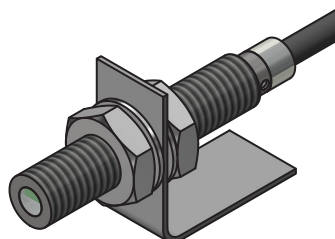
8mm



12mm



MOUNTING ORIENTATION

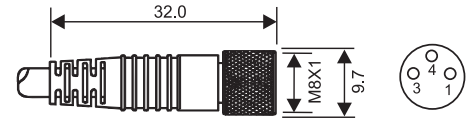


TECHNICAL DATA

Switch Type / Tech. Specs.	See Ordering Information [†]
Sensitivity / Orientation	Electronic: 25 Gauss Parallel Reed: 85 Gauss Parallel (measured from sensor surface)
Shock	Up to 30G (11ms) Reed Only (not applicable for electronics)
Vibration	Up to 20G (10-55 Hz) Reed only
Materials	Cable: PVC House: 300 Series Stainless Steel, TPU
Temperature Range	-20° to +80°C
Environmental Protection	Designed for IP 67 / NEMA 6
Cable Diameter	2.7mm
Wire Gauge	24 AWG standard

(ADDITIONAL) MATING CORDSETS / PIN CONFIGURATION

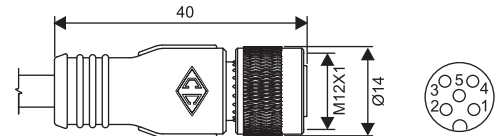
8mm female molded locking connector



Brown = Pin 1
Blue = Pin 3
Black = Pin 4

Order P/N:
RC08-AFM030-0120C10A (2m length)
RC08-AFM030-0150C10A (5m length)

12mm female molded locking connector (3 pole) 250VAC/DC 4 Amps max.



Brown = Pin 1
Blue = Pin 3
Black = Pin 4
N/C = Pin 2
N/C = Pin 5

Order P/N:
RC12-AFM030-0120C10A (2m length)
RC12-AFM030-0150C10A (5m length)

ORDERING INFORMATION

CSM0810 - - 0

Connection Options

0 - 9 ft PVC cable
3 - 8mm quick connect male pigtail*
5 - 12mm quick connect male pigtail*
**Mates with cordsets shown above*

Special Packaging

A - Bulk
G - Individually Bagged

Switch [†] Type	Description	Function	Switching Voltage	Switching Current	Switching Power	Voltage Drop	Magnetic Sensitivity
01	Reed Switch	Normally Open SPST	0 - 120V AC/DC 50/60 Hz	0.5 Amps Max.	5 Watts Max.	0 Volts	85 Ga.
31	Electronic for Reed Magnet, No LED & Sourcing	Normally Open PNP	5 - 24 VDC	0.2 Amps Max.	4.8 Watts Max.	1.0 Volts	25 Ga.
32	Electronic for Reed Magnet, No LED & Sinking	Normally Open NPN	5 - 24 VDC	0.2 Amps Max.	4.8 Watts Max.	1.0 Volts	25 Ga.

Ordering Example: CSM0810-001-0A

9 ft. PVC cable, Reed Switch, Normally Open, 0-120V AC/DC 50/60 Hz, Bulk Packaged.