

# Quick Start Manual



**truflo**®

  
**RoHS**  
Compliant **CE**

Read the user's manual carefully before starting to use the unit.  
Producer reserves the right to implement changes without prior notice.

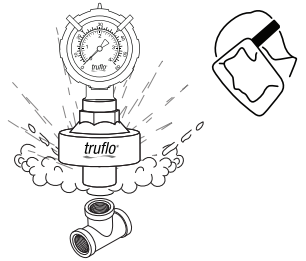
# Truflo® — OBS-GO Series

## Pressure Gauges

**ICON**™ Corrosion-Free  
PROCESS CONTROLS Instrumentation Equipment™

### Safety Information

- De-pressurize and vent system prior to installation or removal
- Confirm chemical compatibility before use
- **DO NOT** exceed maximum temperature or pressure specifications
- **ALWAYS** wear safety goggles or face-shield during installation and/or service
- **DO NOT** alter product construction



#### Warning | Caution | Danger

Indicates a potential hazard. Failure to follow all warnings may lead to equipment damage, or failure, injury, or death.



#### Note | Technical Notes

Highlights additional information or detailed procedure.



#### Personal Protective Equipment (PPE)

Always utilize the most appropriate PPE during installation and service of Truflo products.



#### Pressurized System Warning

Sensor may be under pressure. Take caution to vent system prior to installation or removal. Failure to do so may result in equipment damage and/or serious injury.

Before installation, be certain the appropriate gauge has been selected when considering operating pressure/full scale pressure/proof pressure, wetted material requirements, media compatibility, operating temperature, vibration, pulsation, desired accuracy and any other gauge component related to the service application. This includes the potential need for protective attachments and/or special installation requirements.

Failure to do so could result in equipment damage, gauge failure and/or personal injury.

Only qualified personnel should be permitted to install and maintain pressure gauges.

### Applicable Standards

- EN 837-1 : Bourdon tube pressure gauges, dimensions, metrology, requirements and testing.
- EN 837-2 : Selection and installation recommendations for pressure gauges.
- ASME B40.100 : Pressure gauges and gauge attachments
- 2014/68/EC : Pressure equipment directive.
- Specifications : Please refer to the respective OBS Series datasheet.

### Product Description

The OBS-GO Series Pressure Gauges are the industry's most accurate pressure gauge on the market. With a Thermoplastic Polypropylene enclosure, these gauges were engineered to last in the most corrosive environments.

A ¼" NPT 316 SS connection comes standard on all OBS-GO Pressure Gauges. This connection allows for them to be a perfect mate with our GI Series Gauge Guards when dealing with extremely corrosive chemicals.

Gauge guards are utilized to protect the pressure gauge from any corrosive media in the process system via an isolator diaphragm. OBS-GO Pressure Gauges come factory pre-filled\*, allowing us to achieve an industry leading accuracy of  $\pm 0.75\%$ .

Each OBS-GO Pressure Gauge is equipped with Color Range Tabs\*. These (3) movable red, yellow, and green range tabs are designed to act as a visual pressure alert for bag or filter change-outs.

\*The OBS-GO4 does not come factory pre-filled, nor does it have color range tabs.



# Truflo® — OBS-GO Series Pressure Gauges

## Installation Instructions

- Do not tighten by grasping the case of the gauge as this may cause damage.  
**Always Pressure Test Connections for Leaks with Water Prior to Use on Chemical Service.**
- Before installing the OBS-GO Series pressure gauge, ensure attention is given to the Process Liquid, Chemical Compatibility, Temperature, Vibration, Pressure Spikes, and other climatic and application conditions that may adversely affect the performance.
- The user shall ensure that the correct gauge pressure range and the correct materials of construction are selected.

When installing the gauge connection into the application, use the wrench area (above the threaded portion) to thread in and tighten the gauge. **Do not use the gauge case to install the gauge. This could result in loss of accuracy, excessive friction, or mechanical damage to the pressure element or gauge case.** The gauge connection must be compatible with the mating connection and must be assembled appropriately. If the mating parts do not seal completely, a sealing material may be considered.

After installation, the vent plug can be cut to relieve internal pressure changes in the gauge case that otherwise would have been induced by environmental changes in pressure and/or temperature. Without being vented this change in internal pressure could adversely affect the accuracy of the gauge.

If liquid filled, only open vent plugs when the plug is oriented in the vertical position.

## Storage

- Gauge should remain in original packaging until installation.  
This will protect from mechanical damage as well as environmental conditions.

## Maintenance & Repairs

Check regularly to ensure the gauge is in good working order. When removing the gauge from the application, make sure there is no pressure in the system and all system media has been isolated from the gauge.

If gauge is damaged or out of calibration, a new gauge must be installed.

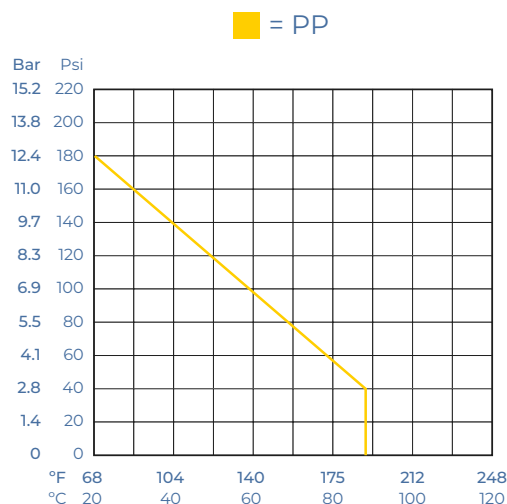
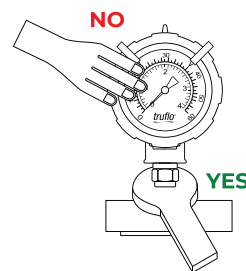
**IMPORTANT : These gauges are not to be re-calibrated.**

Misuse or misapplication of this gauge could most certainly result in gauge failure, equipment damage and/or personal injury.

## Temperature | Pressure Graphs | Non-Shock

### NOTE:

The pressure/temperature graphs are specifically for the Truflo® Pressure Gauges. During system design, the specifications of all components must be considered.



# Truflo® — OBS-GO Series Pressure Gauges

## Model Selection

### OBS-GO — Pressure Gauge

Size	Part Number	Material
¼" NPT	OBS-GO-0-X	PP   316SS

X = Max Pressure

15 ▶ 0 - 15 Psi      100 ▶ 0 - 100 Psi  
30 ▶ 0 - 30 Psi      160 ▶ 0 - 160 Psi  
60 ▶ 0 - 60 Psi      200 ▶ 0 - 200 Psi

Consult Factory for Alternative Pressure Ratings

### OBS-DGO Series Pressure Gauge

Size	Part Number	Material
¼" NPT 316SS	OBS-DGO-0	PP   316SS

X = Max Pressure

15 ▶ 0 - 15 Psi      100 ▶ 0 - 100 Psi  
30 ▶ 0 - 30 Psi      160 ▶ 0 - 160 Psi  
60 ▶ 0 - 60 Psi      200 ▶ 0 - 200 Psi

½" FNPT is standard

Add Suffix -

'M' - Male ½" NPT      'F' - Flanged      'S' - ½" Socket

Consult Factory for Flanged Pricing | Alternative Pressure Ratings

### OBS-GO4 — Pressure Gauge

Size	Part Number	Material	Range
¼" NPT 316SS	OBS-GO4-0-60	PP   316SS	0-60 Psi
¼" NPT 316SS	OBS-GO4-0-100	PP   316SS	0-100 Psi
¼" NPT 316SS	OBS-GO4-0-160	PP   316SS	0-160 Psi

½" FNPT is standard

Add Suffix -

'M' - Male ½" NPT      'F' - Flanged      'S' - ½" Socket

Consult Factory for Flanged Pricing | Alternative Pressure Ratings

### OBS-V — Vacuum Pressure Gauge

Size	Part Number	Material
¼" NPT	OBS-V-PP	PP   316SS

Consult Factory for Alternative Pressure Ratings

### OBS-TT — "Tell Tale" Pressure Gauge

Size	Part Number	Material
¼" NPT 316SS	OBS-TT-PP-0-60	PP   316SS
¼" NPT 316SS	OBS-TT-PP-0-100	PP   316SS
¼" NPT 316SS	OBS-TT-PP-0-160	PP   316SS

½" FNPT is standard

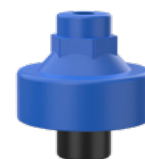
Add Suffix -

'M' - Male ½" NPT      'F' - Flanged      'S' - ½" Socket

Consult Factory for Flanged Pricing | Alternative Pressure Ratings

### GI Series — All Plastic Gauge Guard

Part Number	Material
GI-P	PVC-Teflon® Bonded EPDM
GI-PP	PP-Teflon® Bonded EPDM
GI-PF	PVDF-Teflon® Bonded EPDM



**OBS-GO**  
Pressure Gauge



**OBS-DGO**  
Double Sided Pressure Gauge



**OBS-GO4**  
Pressure Gauge



**OBS-V**  
Vacuum Pressure Gauge



**OBS-TT**  
Pressure Gauge



## Warranty, Returns and Limitations

### Warranty

**Icon Process Controls Ltd** warrants to the original purchaser of its products that such products will be free from defects in material and workmanship under normal use and service in accordance with instructions furnished by **Icon Process Controls Ltd** for a period of one year from the date of sale of such products. **Icon Process Controls Ltd** obligation under this warranty is solely and exclusively limited to the repair or replacement, at Icon Process Controls Ltd option, of the products or components, which **Icon Process Controls Ltd** examination determines to its satisfaction to be defective in material or workmanship within the warranty period. **Icon Process Controls Ltd** must be notified pursuant to the instructions below of any claim under this warranty within thirty (30) days of any claimed lack of conformity of the product. Any product repaired under this warranty will be warranted only for the remainder of the original warranty period. Any product provided as a replacement under this warranty will be warranted for the one year from the date of replacement.

### Returns

Products cannot be returned to **Icon Process Controls Ltd** without prior authorization. To return a product that is thought to be defective, go to [www.iconprocon.com](http://www.iconprocon.com), and submit a customer return (MRA) request form and follow the instructions therein. All warranty and non-warranty product returns to **Icon Process Controls Ltd** must be shipped prepaid and insured. **Icon Process Controls Ltd** will not be responsible for any products lost or damaged in shipment.

### Limitations

This warranty does not apply to products which: 1) are beyond the warranty period or are products for which the original purchaser does not follow the warranty procedures outlined above; 2) have been subjected to electrical, mechanical or chemical damage due to improper, accidental or negligent use; 3) have been modified or altered; 4) anyone other than service personnel authorized by **Icon Process Controls Ltd** have attempted to repair; 5) have been involved in accidents or natural disasters; or 6) are damaged during return shipment to **Icon Process Controls Ltd** reserves the right to unilaterally waive this warranty and dispose of any product returned to **Icon Process Controls Ltd** where: 1) there is evidence of a potentially hazardous material present with the product; or 2) the product has remained unclaimed at **Icon Process Controls Ltd** for more than 30 days after **Icon Process Controls Ltd** has dutifully requested disposition. This warranty contains the sole express warranty made by **Icon Process Controls Ltd** in connection with its products. **ALL IMPLIED WARRANTIES, INCLUDING WITHOUT LIMITATION, THE WARRANTIES OF MERCHANTABILITY AND FITNESS FOR A PARTICULAR PURPOSE, ARE EXPRESSLY DISCLAIMED.** The remedies of repair or replacement as stated above are the exclusive remedies for the breach of this warranty. **IN NO EVENT SHALL Icon Process Controls Ltd BE LIABLE FOR ANY INCIDENTAL OR CONSEQUENTIAL DAMAGES OF ANY KIND INCLUDING PERSONAL OR REAL PROPERTY OR FOR INJURY TO ANY PERSON. THIS WARRANTY CONSTITUTES THE FINAL, COMPLETE AND EXCLUSIVE STATEMENT OF WARRANTY TERMS AND NO PERSON IS AUTHORIZED TO MAKE ANY OTHER WARRANTIES OR REPRESENTATIONS ON BEHALF OF Icon Process Controls Ltd.** This warranty will be interpreted pursuant to the laws of the province of Ontario, Canada.

If any portion of this warranty is held to be invalid or unenforceable for any reason, such finding will not invalidate any other provision of this warranty.

For additional product documentation and technical support visit:

[www.iconprocon.com](http://www.iconprocon.com) | e-mail: [sales@iconprocon.com](mailto:sales@iconprocon.com) or [support@iconprocon.com](mailto:support@iconprocon.com) | Ph: 905.469.9283



by



Corrosion-Free  
Instrumentation Equipment

**Phone:** 905.469.9283 • **Sales:** [sales@iconprocon.com](mailto:sales@iconprocon.com) • **Support:** [support@iconprocon.com](mailto:support@iconprocon.com)